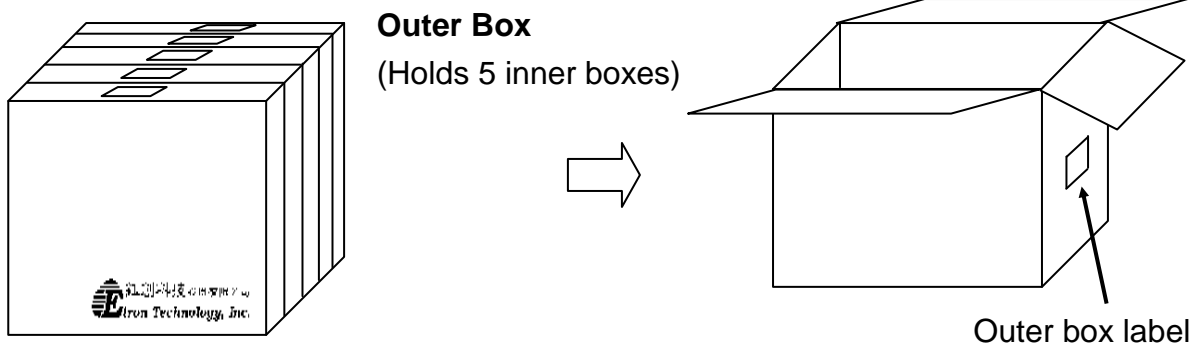
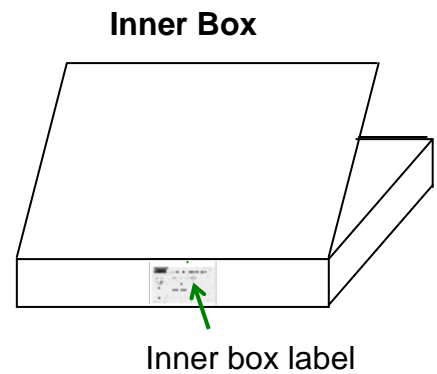
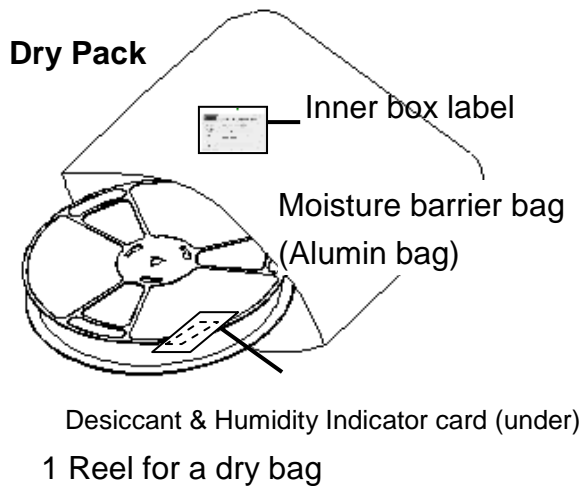
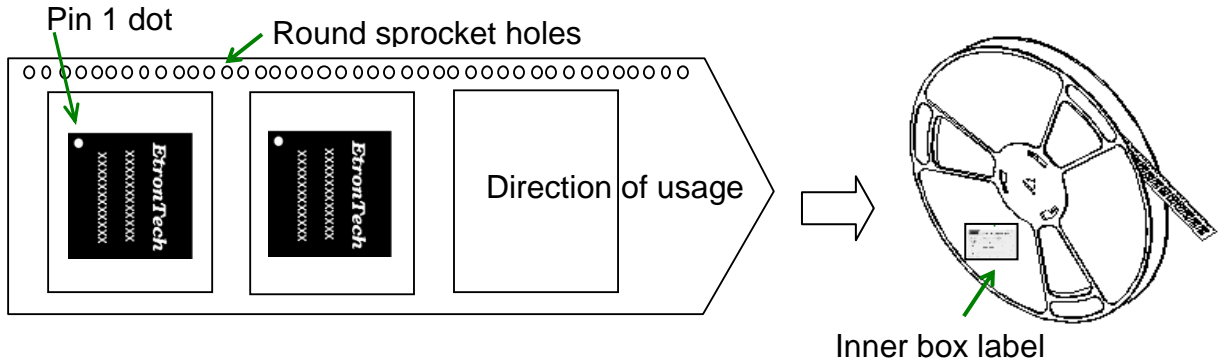


(1) Packing Procedure -2

■ Packing procedure for Tape & Reel



(2) Packaging Quantity

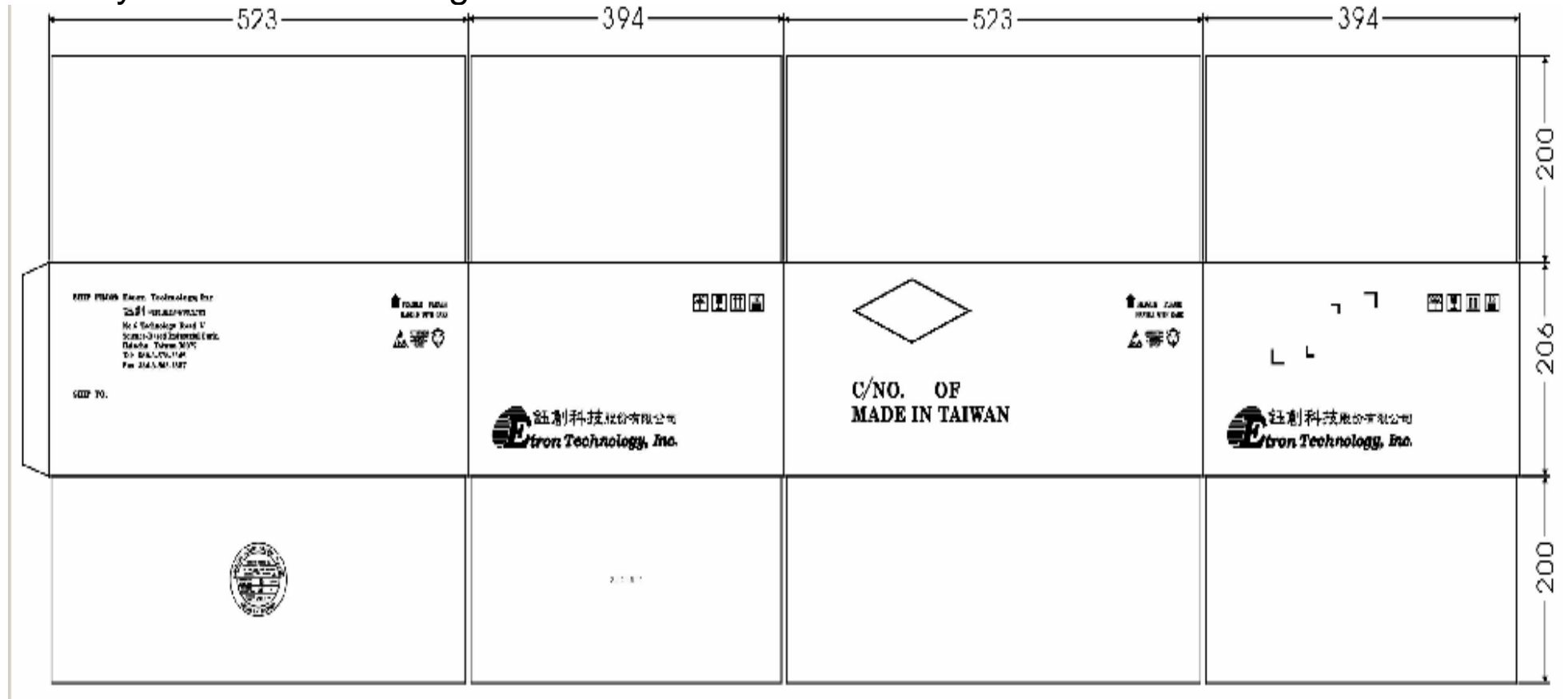
■ Quantity of Container

The quantity for each container is described as below table for reference.

Pkg. Type	Packing Qty	Dry Bag	Inner Box	Outer Box
8*8 54 Ball-BGA	348 ea/Tray	10 Tray (3480 ea)	1 Dry Bag (3480 ea)	6 Inner Boxes (20880 ea)
	2500 ea/T&R	1 Reel (2500 ea)	1 Dry Bag (2500 ea)	5 Inner Boxes (12500 ea)

(3) Specification of Shipping Box -1

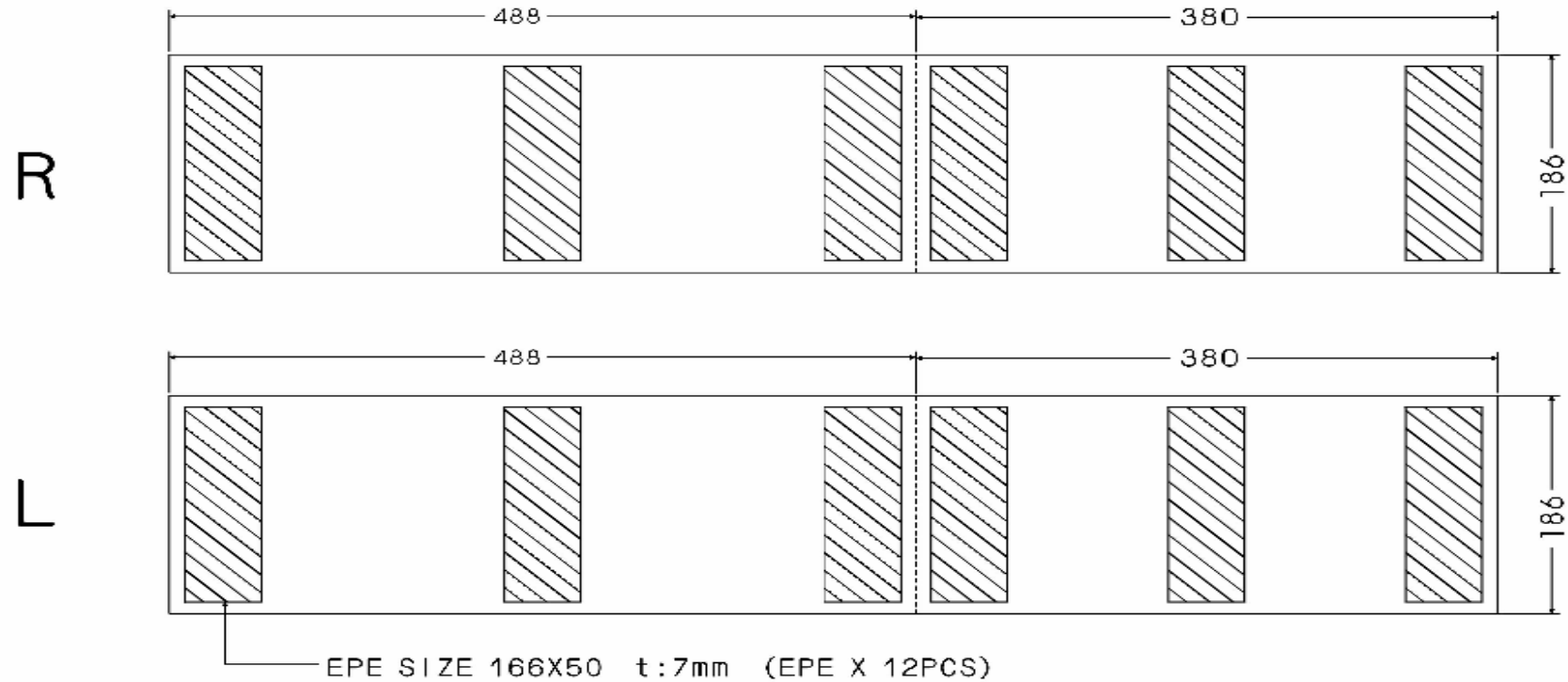
■ Tray Outer Box Drawing



Tolerance: ±5mm

(3) Specification of Shipping Box -2

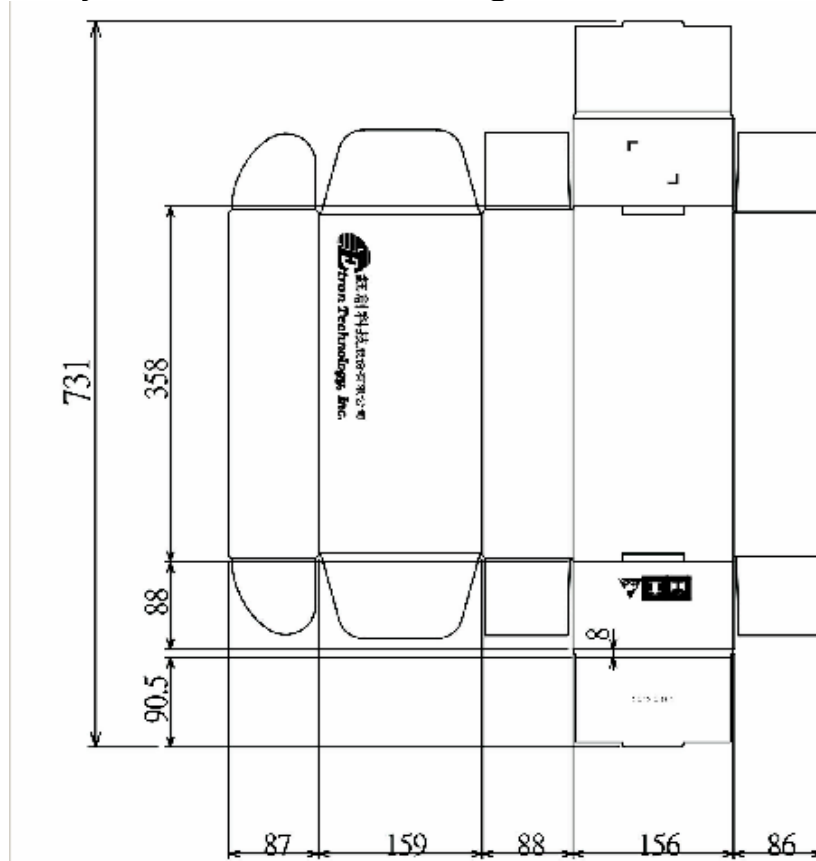
■ Tray Outer Box Drawing-buffer



Tolerance: $\pm 3\text{mm}$

(3) Specification of Shipping Box -2

■ Tray Inner Box Drawing



Tolerance: $\pm 3\text{mm}$

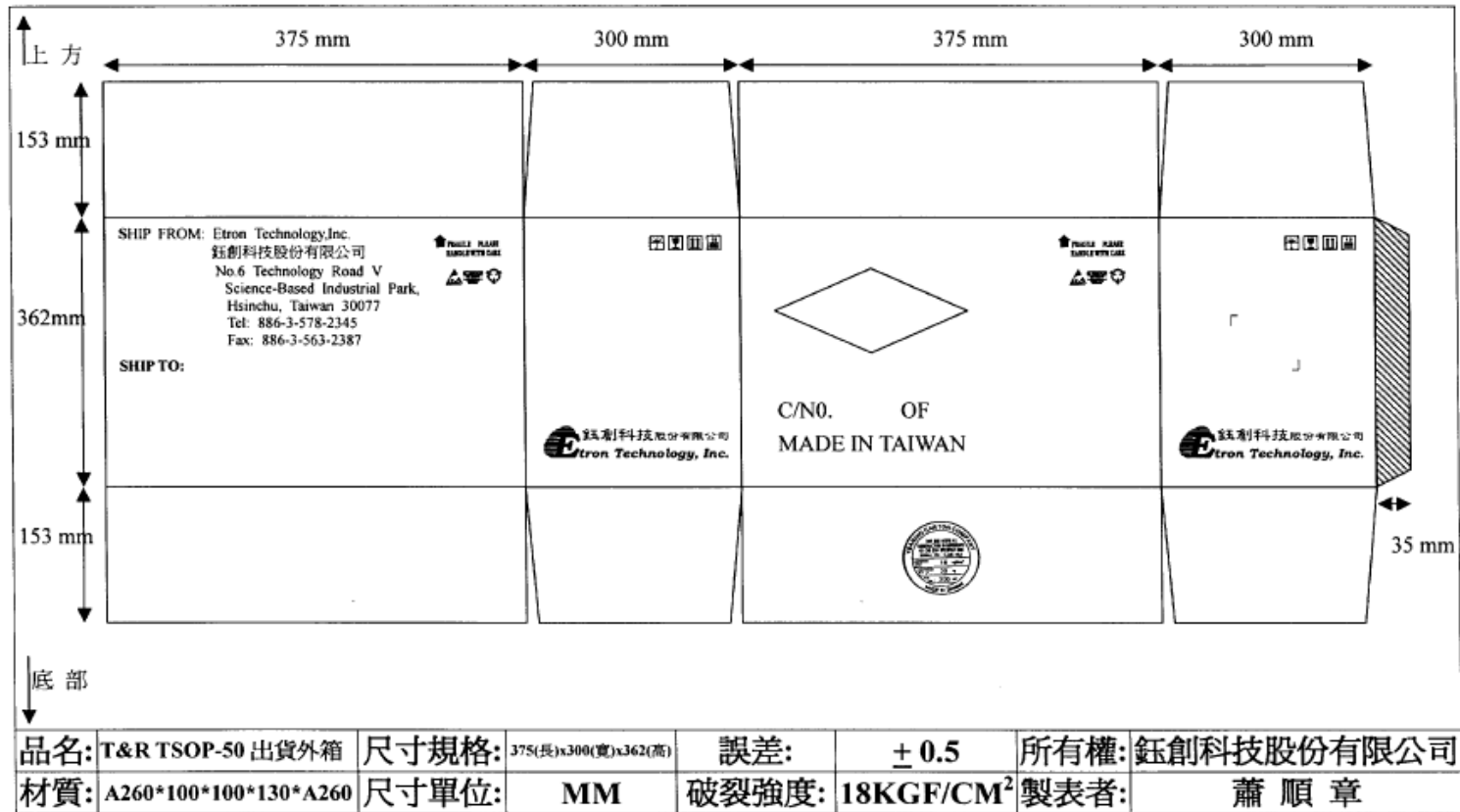


鈺創科技股份有限公司
Etron Technology, Inc.



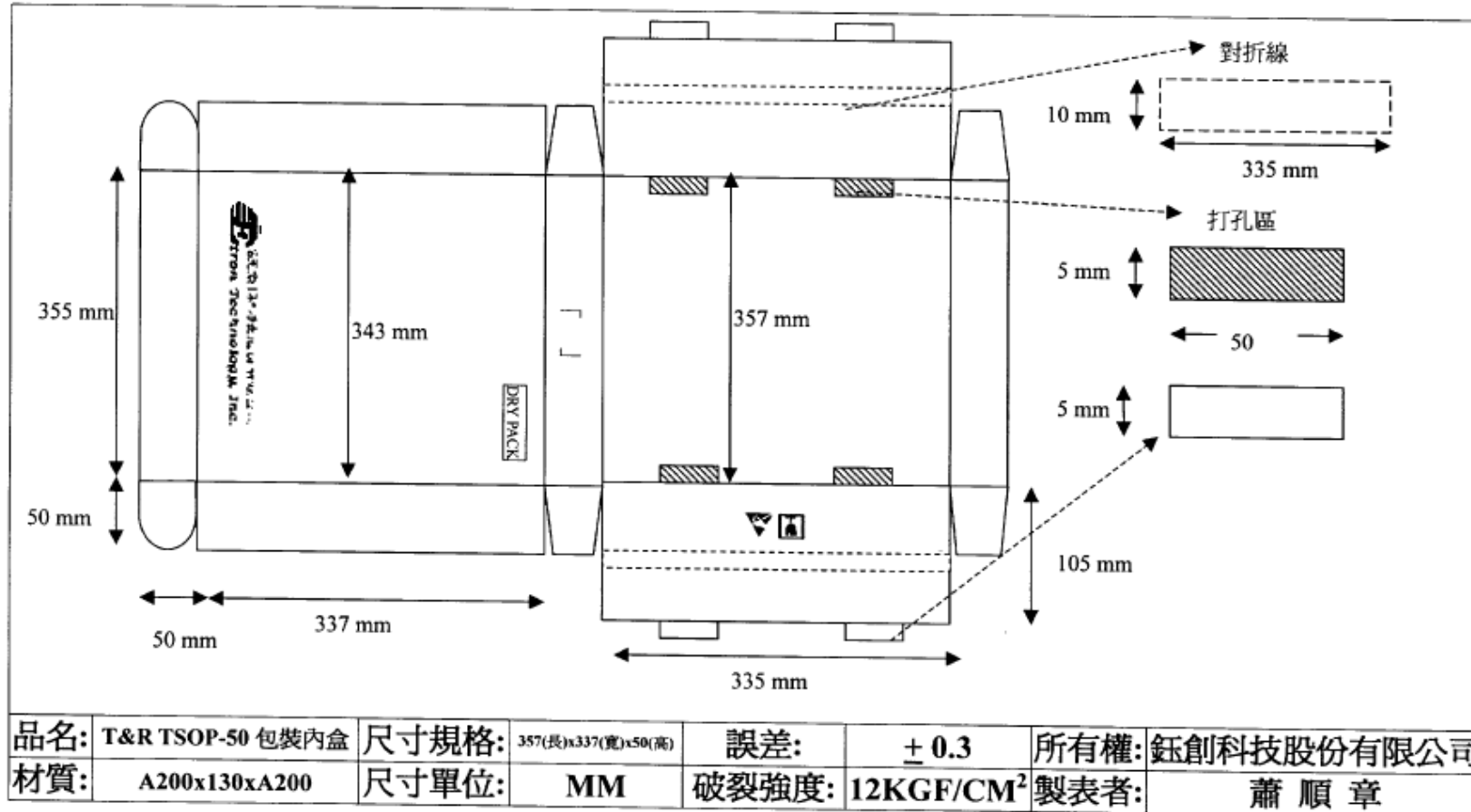
(3) Specification of Shipping Box -3

■ T/R Outer Box Drawing



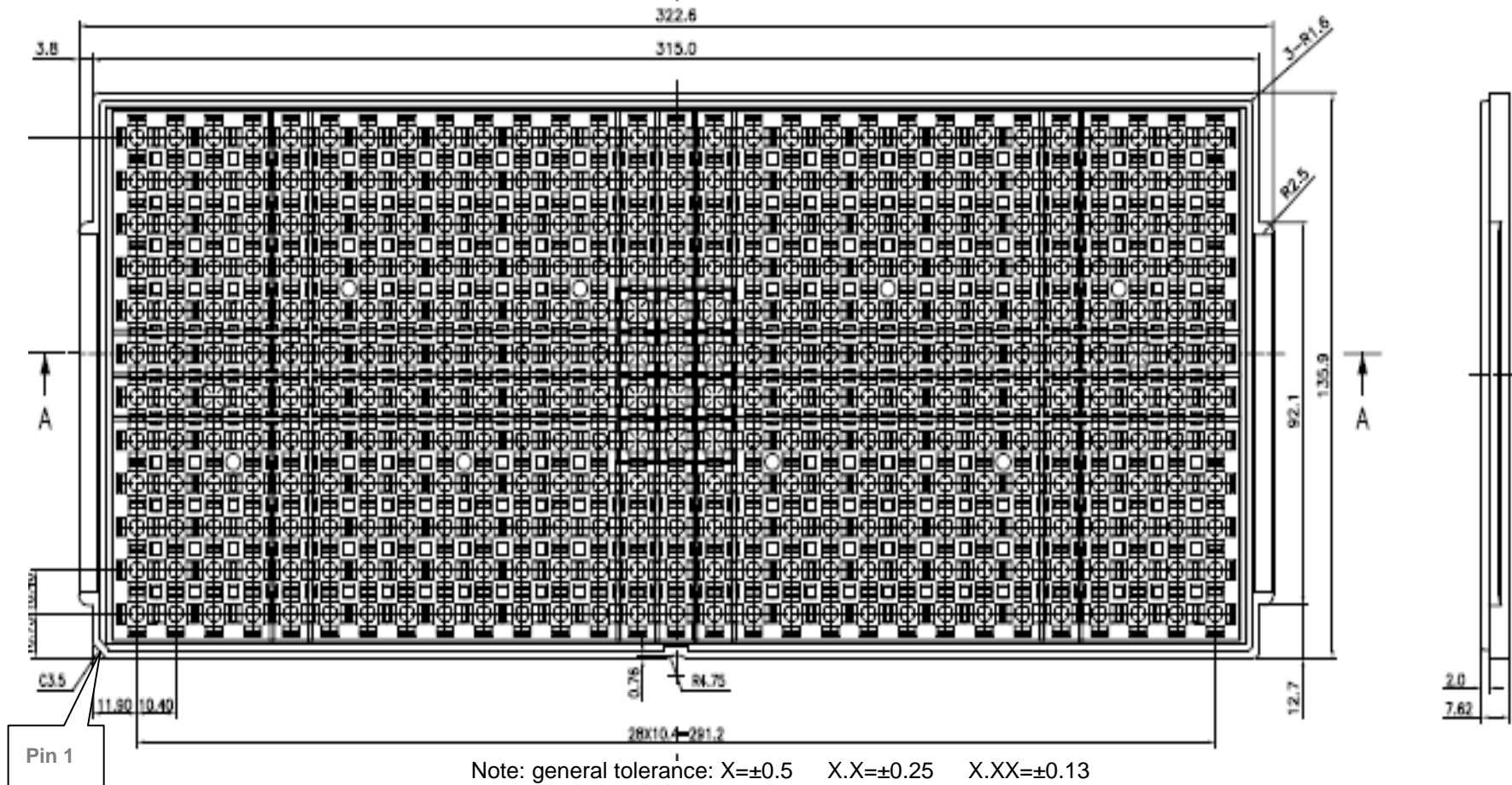
(3) Specification of Shipping Box -4

■ T/R Inner Box Drawing



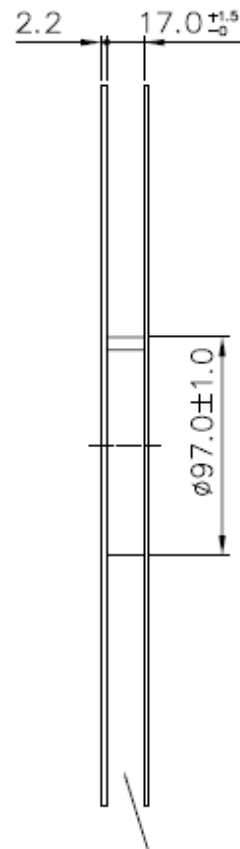
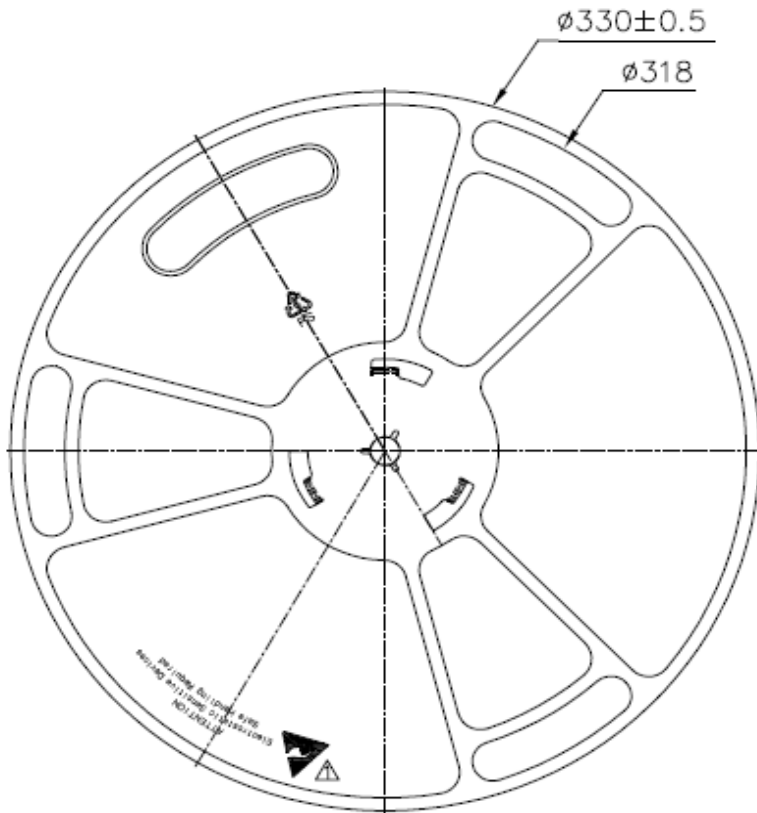
(4) Packing Drawing -1

- Tray Drawing of 8x8 54B t=1.2mm-BGA

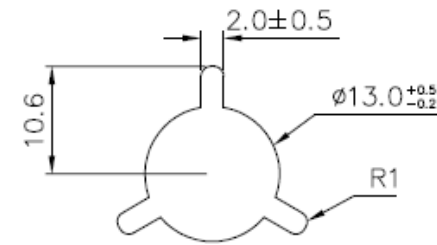


(4) Packing Drawing -2

Lock Reel Drawing of 8x8 54B-BGA



EBD4161-XXX
PART NO.



Note: general tolerance:

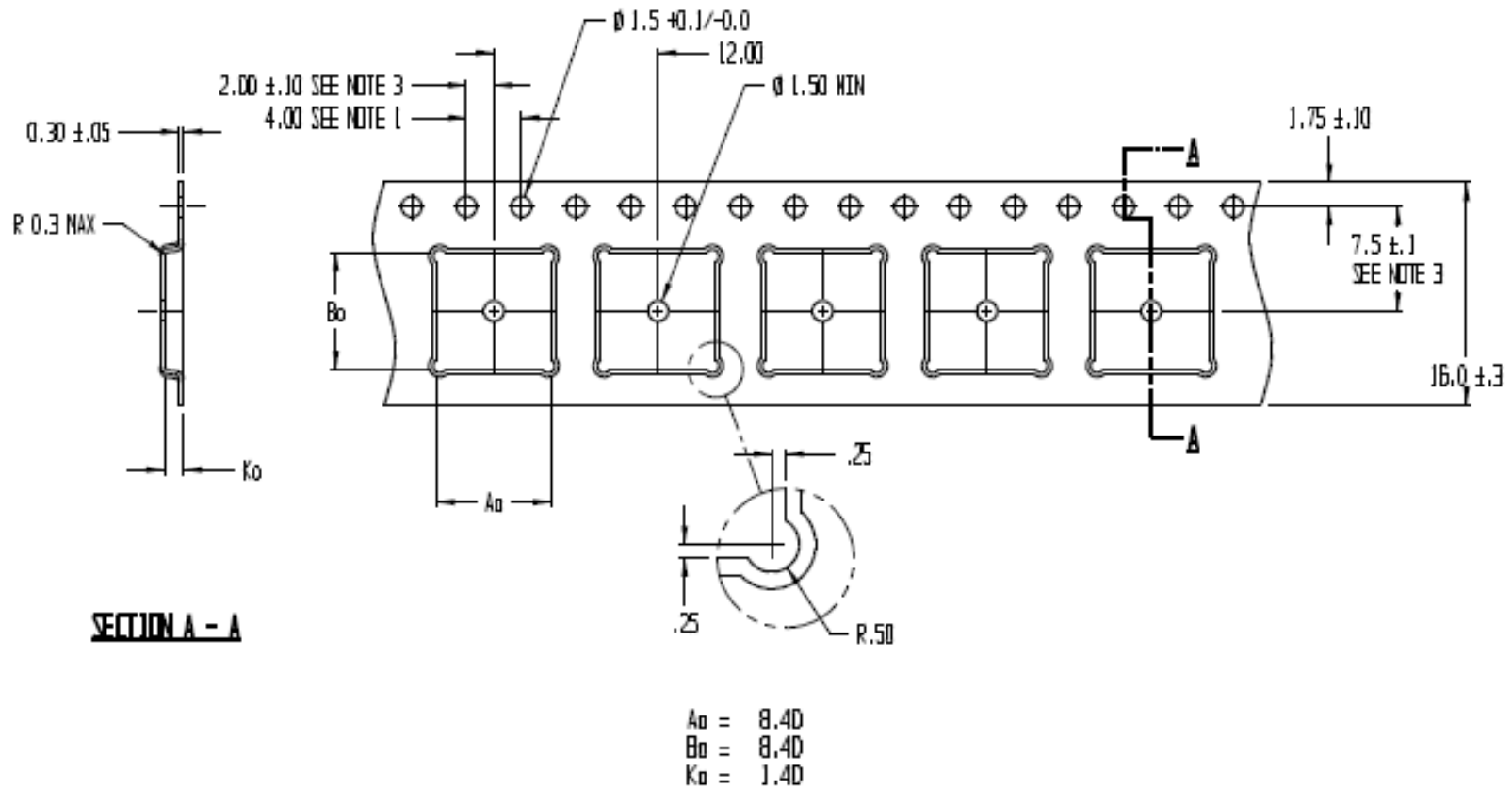
X = ± 0.5

X.X = ± 0.25

X.XX = ± 0.13

(4) Packing Drawing -3

- Carrier Tape Drawing of 8x8 54B-BGA



Note: general tolerance: X = ±1 X.X = ±0.25 X.XX = ±0.13