



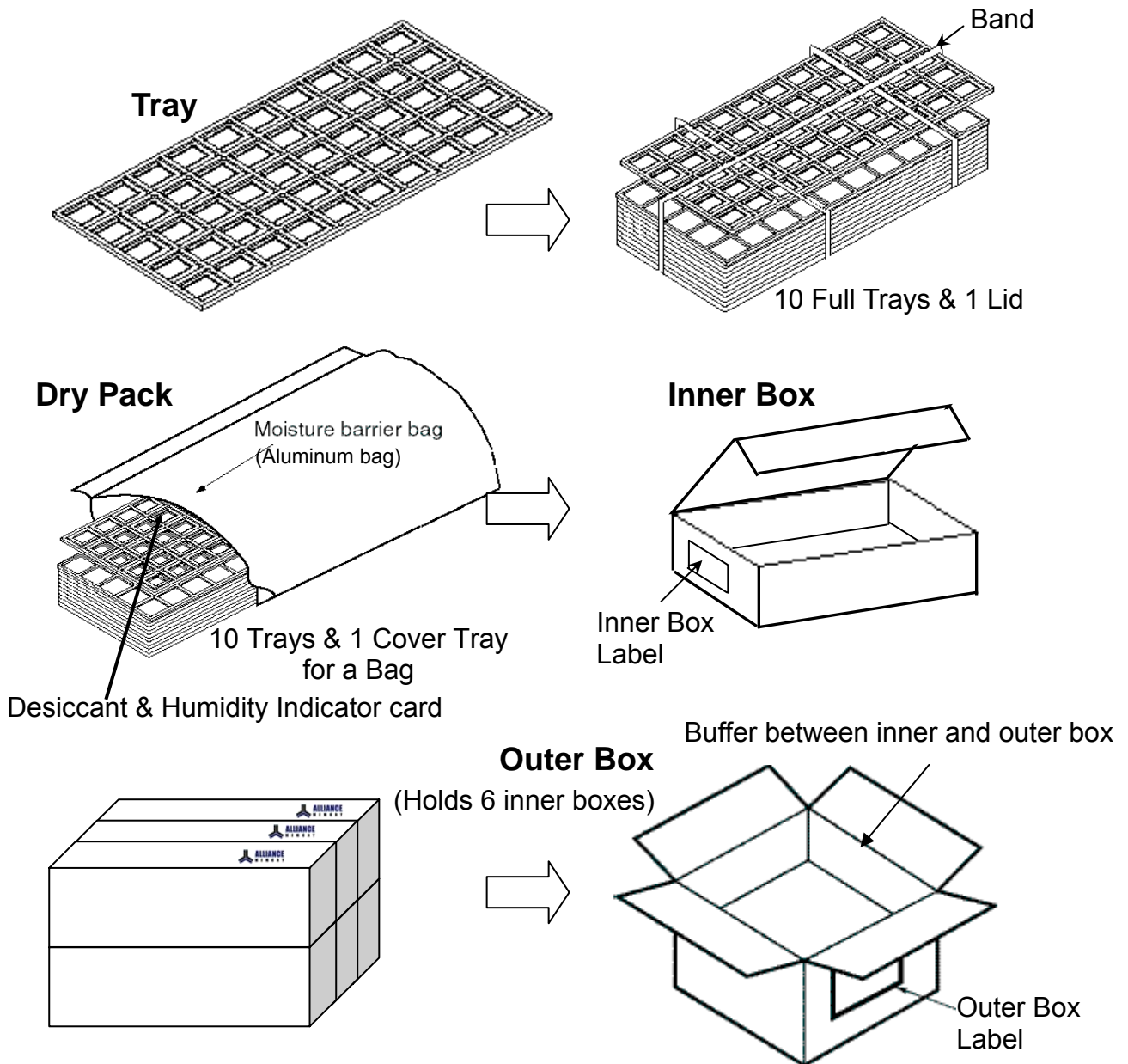
Packing Procedure For 54/66/86L-TSOP-II Product

Table of Contents

(1) PACKING PROCEDURE	1
(2) PACKAGING QUANTITY.....	2
(3) SPECIFICATION OF SHIPPING BOX	4
(4) PACKING DRAWING	9

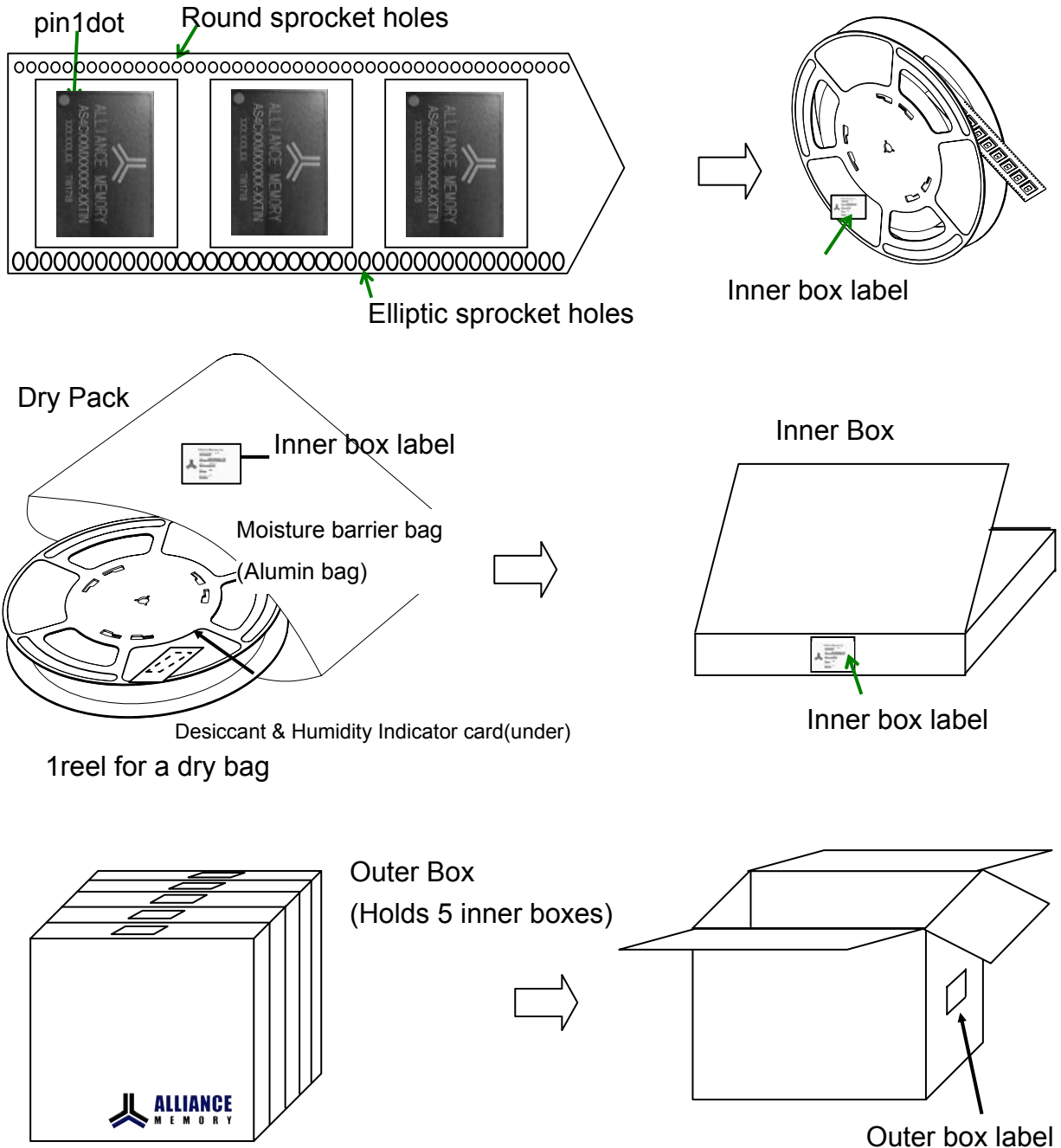
(1) Packing Procedure -1

■ Packing procedure for Tray



(1) Packing Procedure -2

■ Packing procedure for Tape & Reel



(2) Packaging Quantity

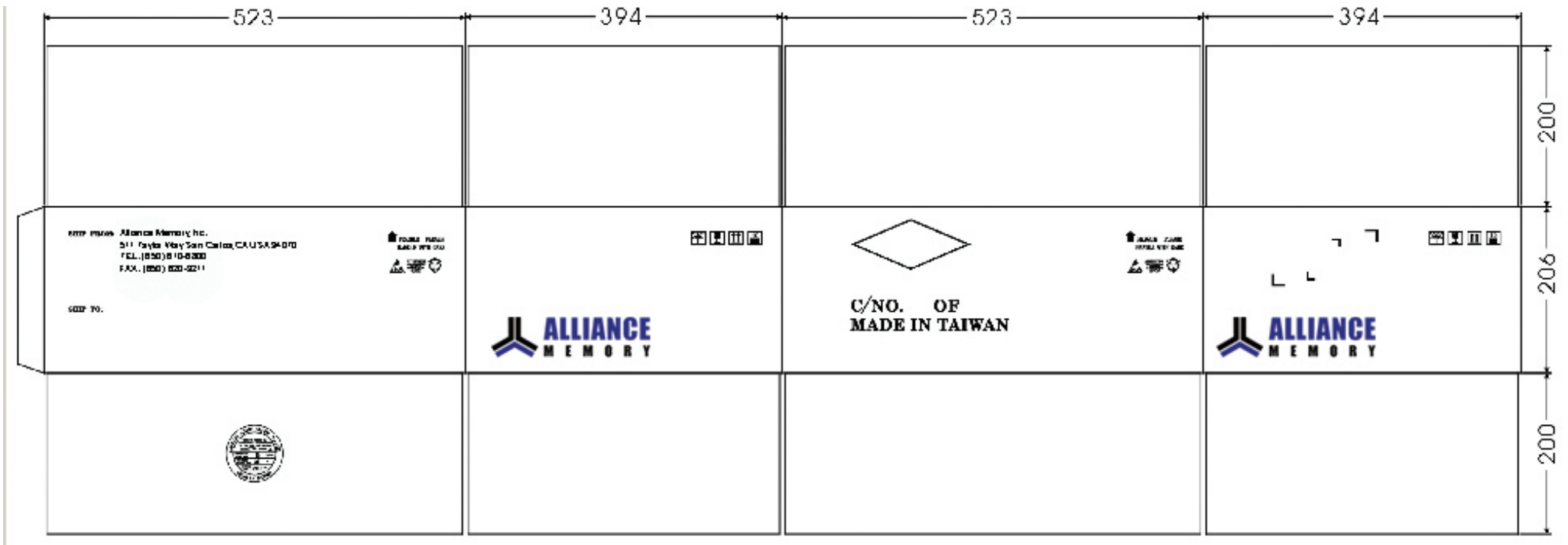
■ Quantity of Container

The quantity for each container is described as below table for reference.

Pkg. Type	Packing Qty	Dry Bag	Inner Box	Outer Box
86L-TSOP-II 66L-TSOP-II 54L-TSOP-II	108ea/Tray	10 Trays (1080 ea)	1 Dry Bag (1080 ea)	6 Inner Boxes (6480 ea)
	1000ea/T&R	1 Reel (1000 ea)	1 Dry Bag (1000 ea)	5 Inner Boxes (5000 ea)

(3) Specification of Shipping Box -1

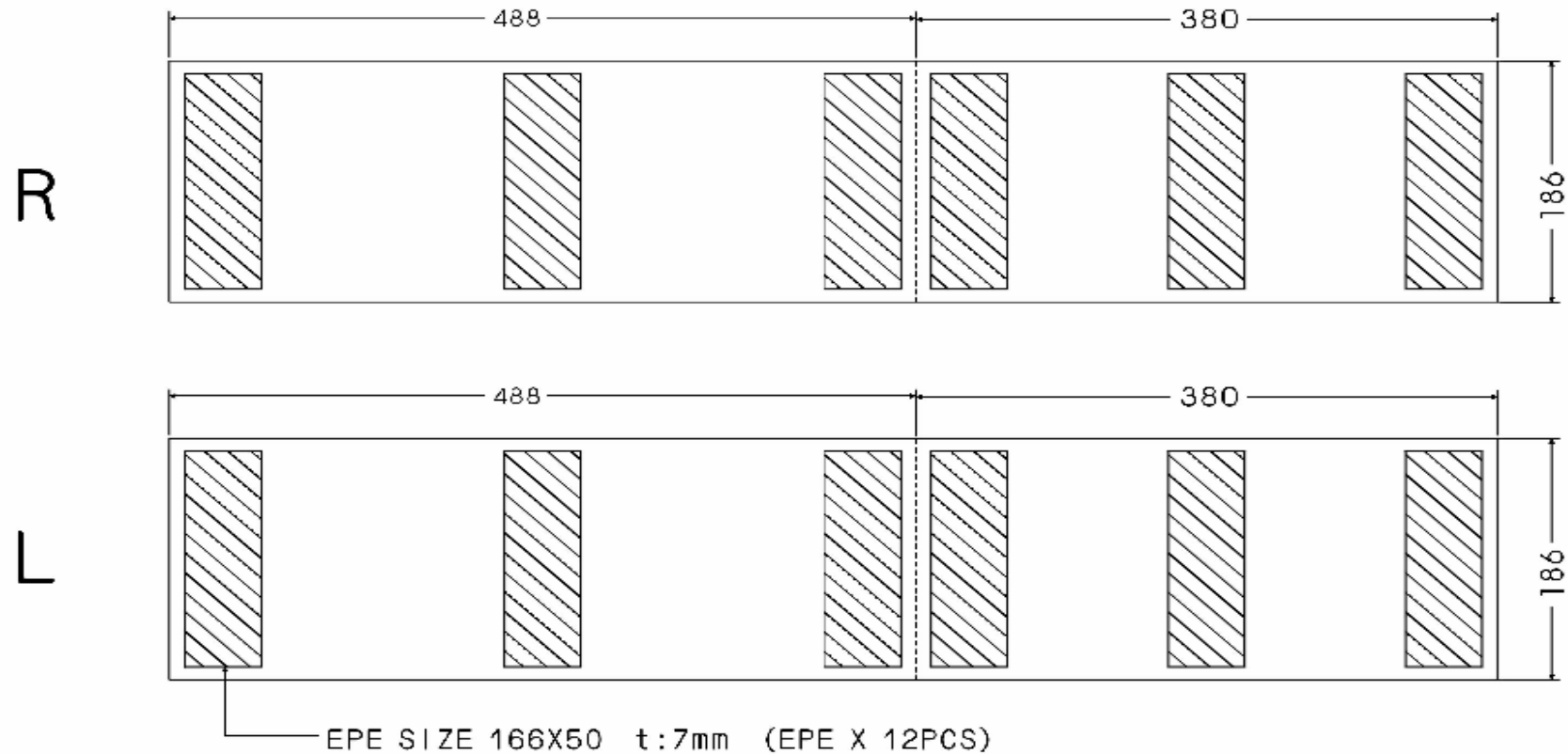
■ Tray Outer Box Drawing



Tolerance: ± 5mm

(3) Specification of Shipping Box -2

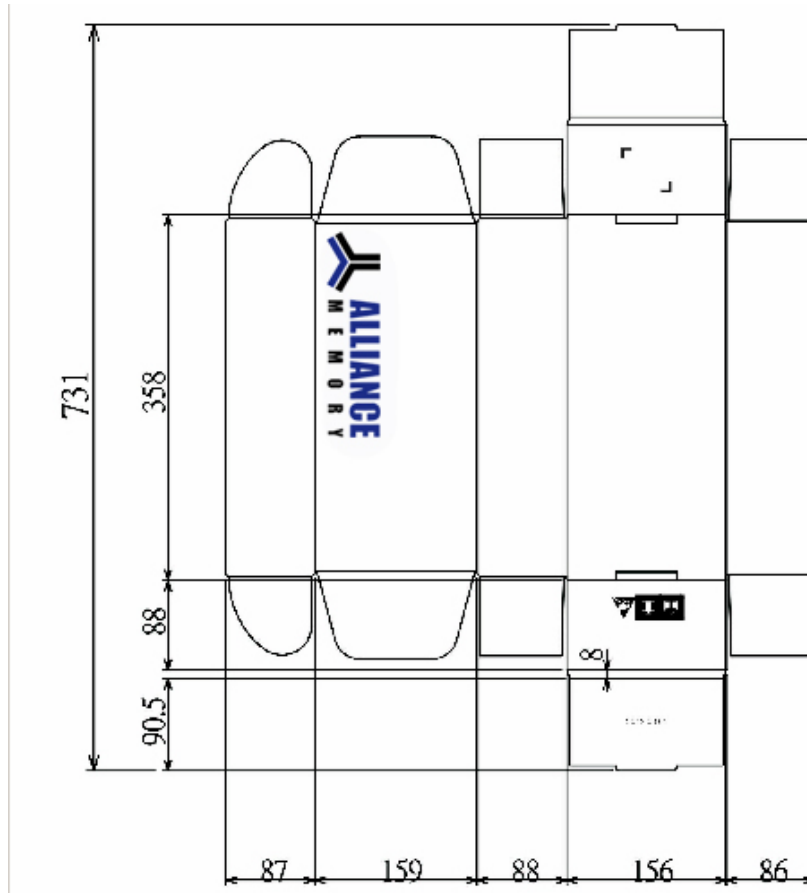
■ Tray Outer Box Drawing-buffer



Tolerance: $\pm 3\text{mm}$

(3) Specification of Shipping Box -3

■ Tray Inner Box Drawing

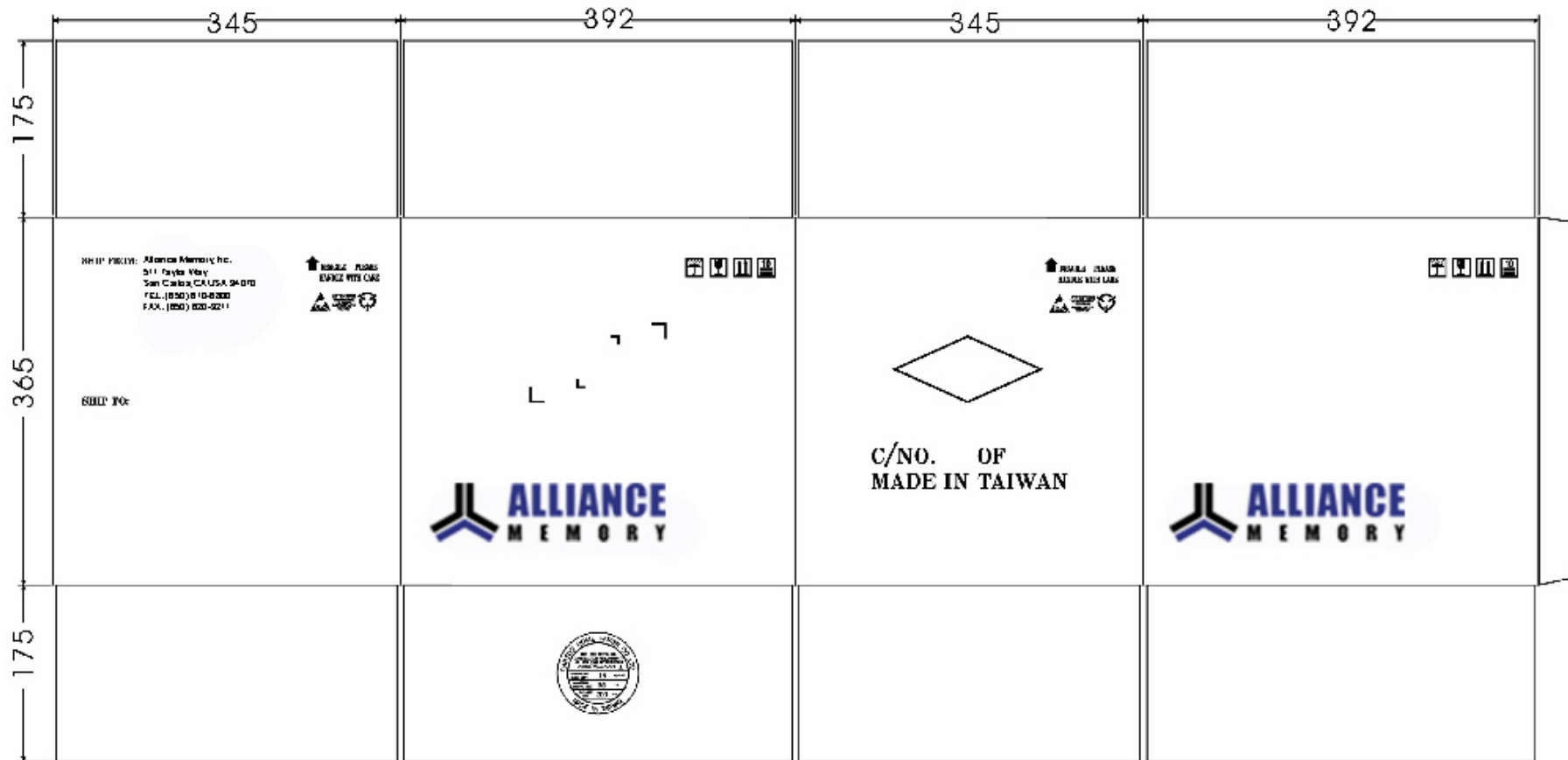


Tolerance: $\pm 3\text{mm}$



(3) Specification of Shipping Box -4

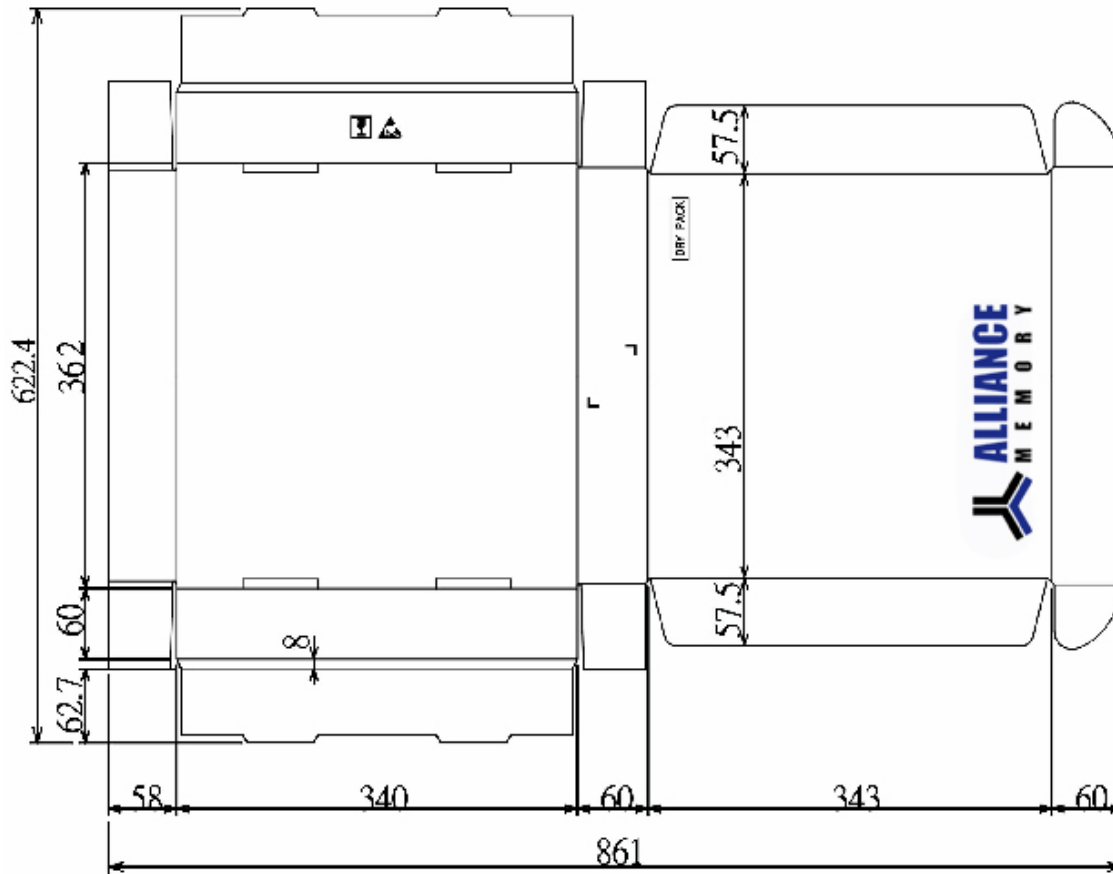
■ T/R Outer Box Drawing



Tolerance: ± 5mm

(3) Specification of Shipping Box -5

■ T/R Inner Box Drawing



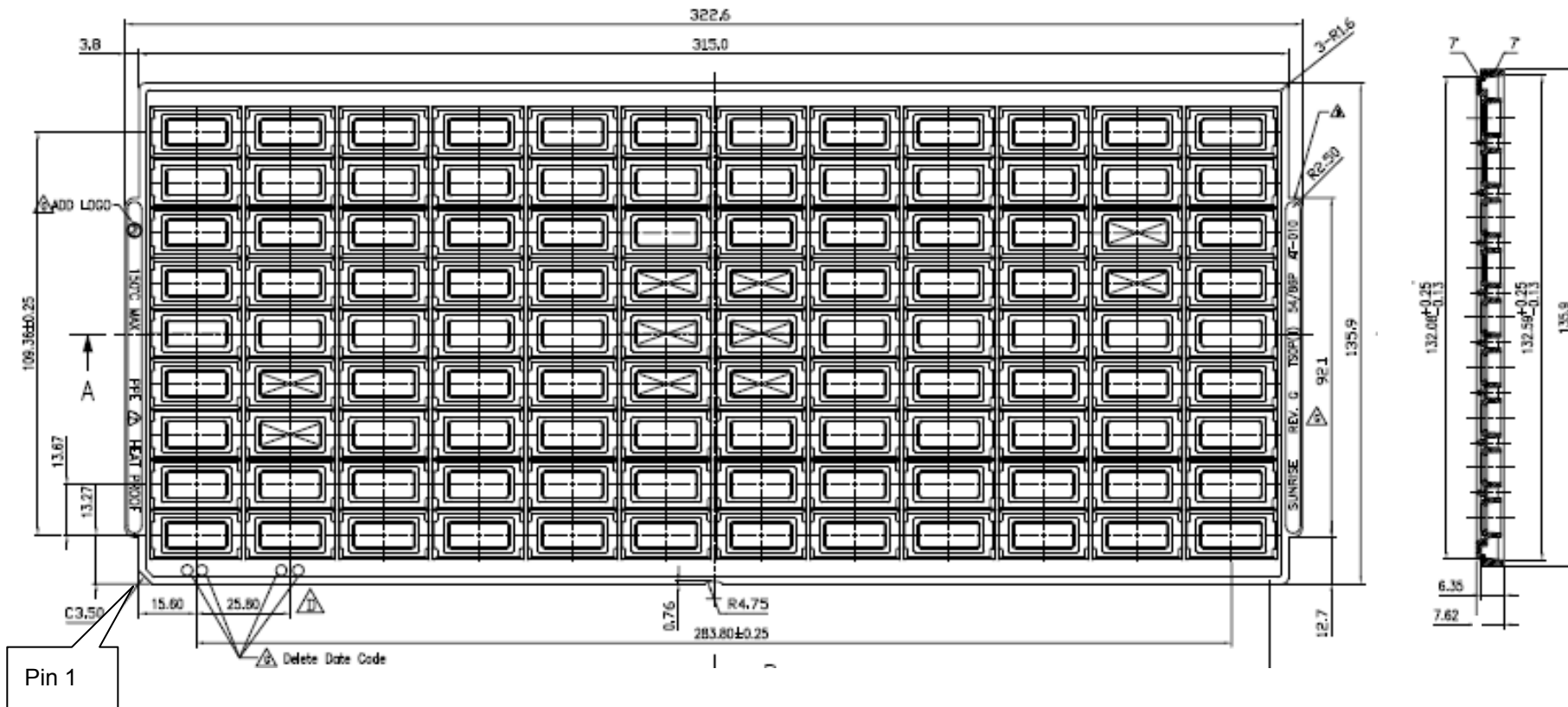
DRY PACK



Tolerance: ± 5mm

(4) Packing Drawing -1

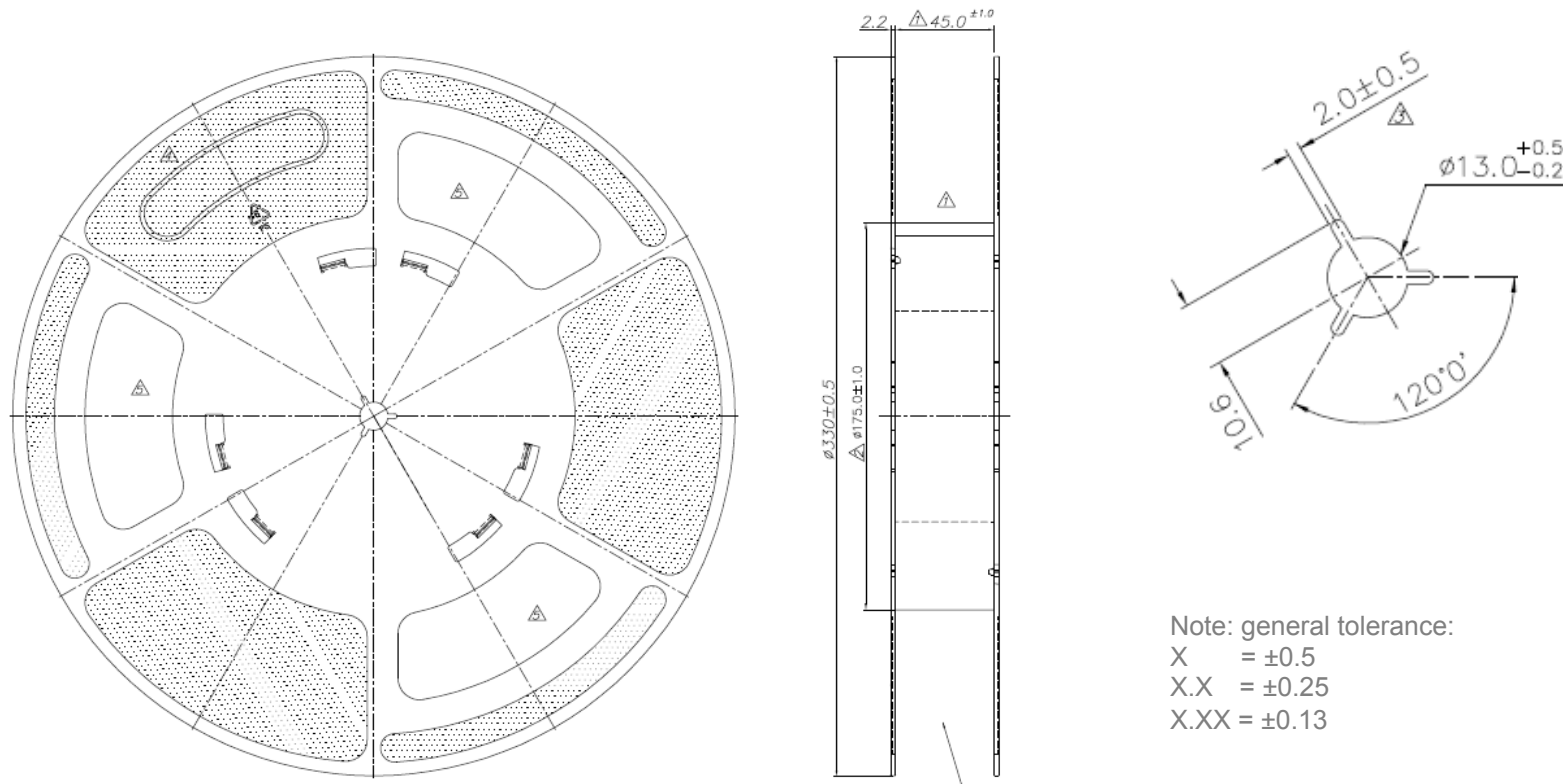
Tray Drawing of TSOP II 54/ 66/86



Note: general tolerance: X=±0.5 X.X=±0.25 X.XX=±0.13

(4) Packing Drawing -2

■ Lock Reel Drawing of 86L/66L/54L-TSOPII



Note: general tolerance:

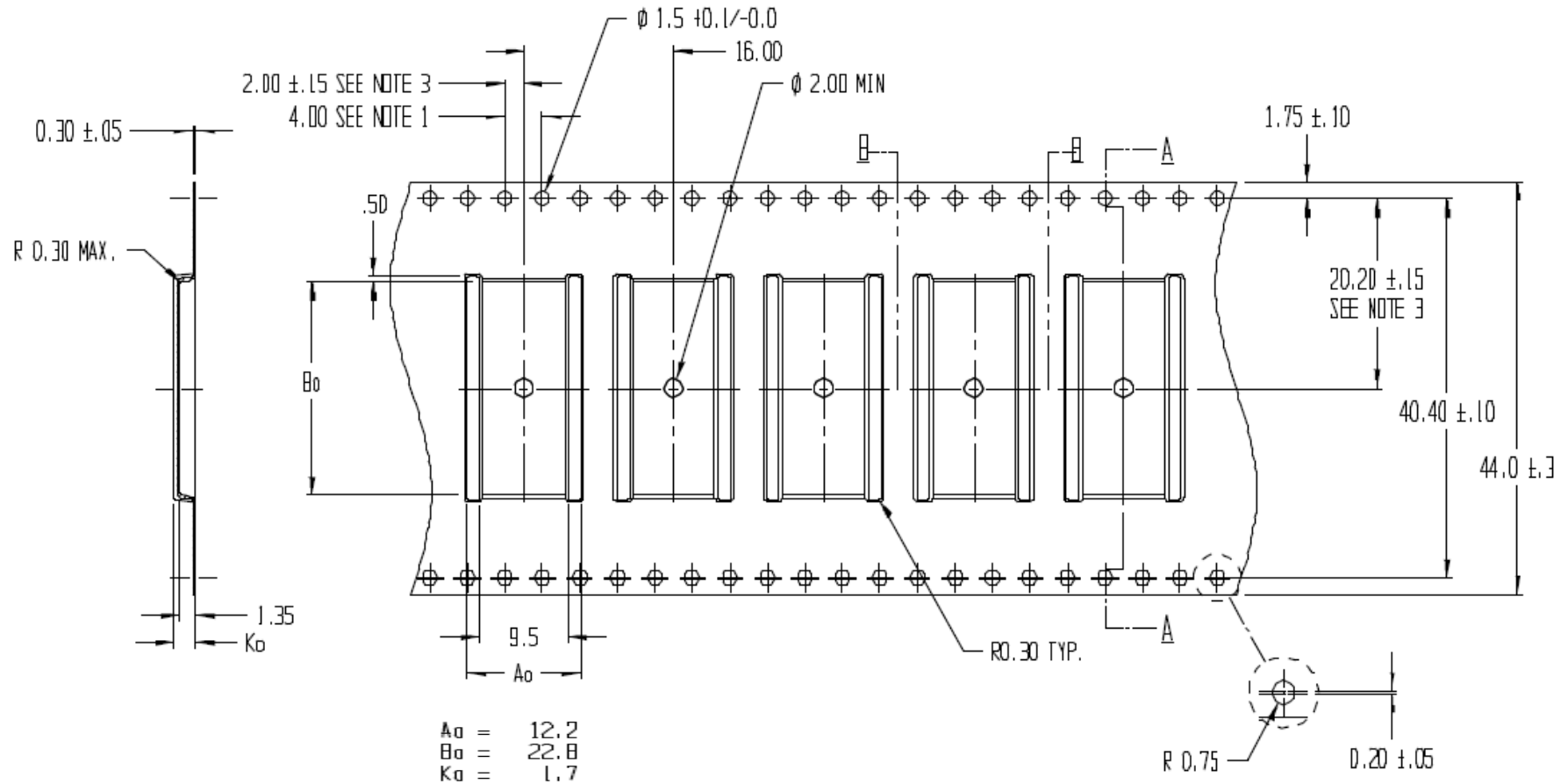
X = ±0.5

X.X = ±0.25

X.XX = ±0.13

(4) Packing Drawing -3

Carrier Tape Drawing of 86L/66L/54L-TSOPII



$A_0 = 12.2$
 $B_0 = 22.8$
 $K_0 = 1.7$

Note: general tolerance: $X.X = \pm 0.2$ $X.XX = \pm 0.13$