

# Packing Procedure

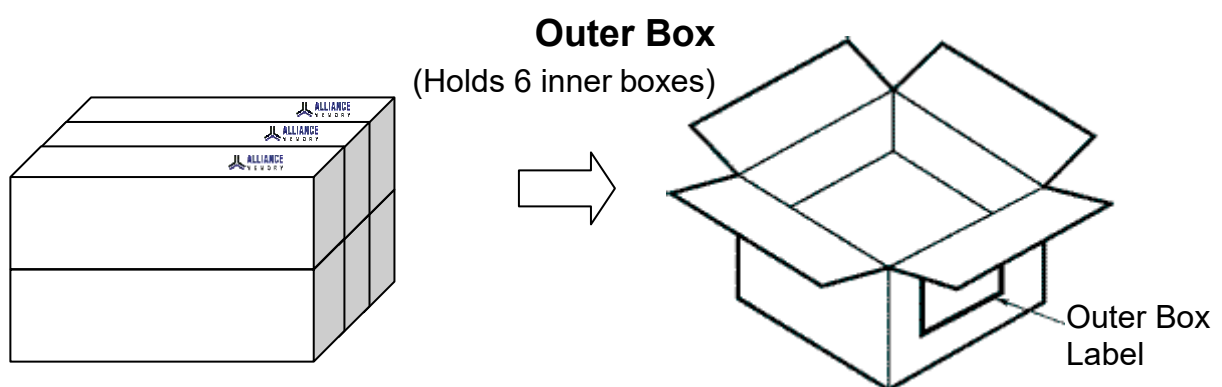
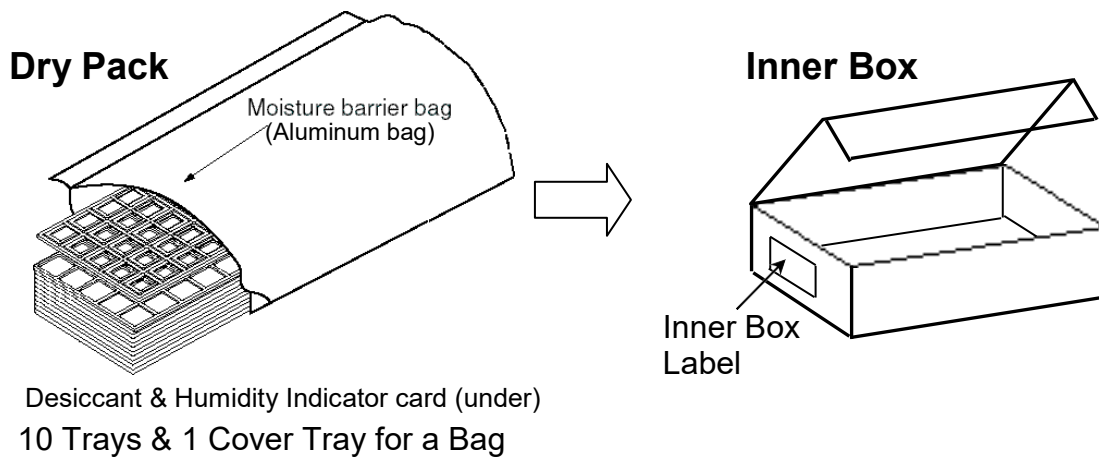
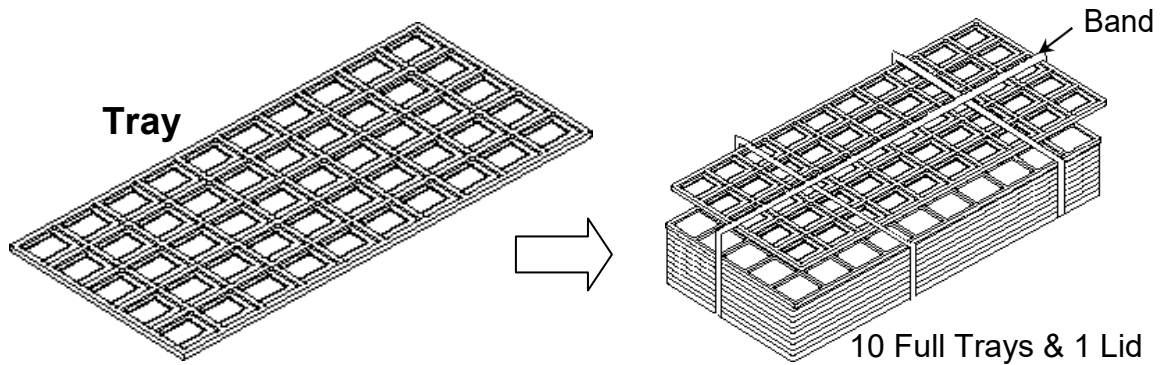
## For 9x13 96B BGA Product

### Table of Contents

- (1) PACKING PROCEDURE**
- (2) PACKAGING QUANTITY**
- (3) SPECIFICATION OF SHIPPING BOX**
- (4) PACKING DRAWING**

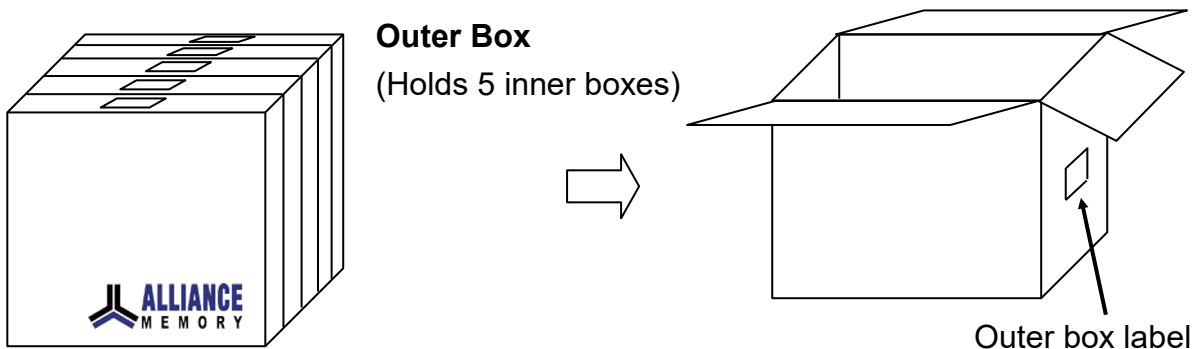
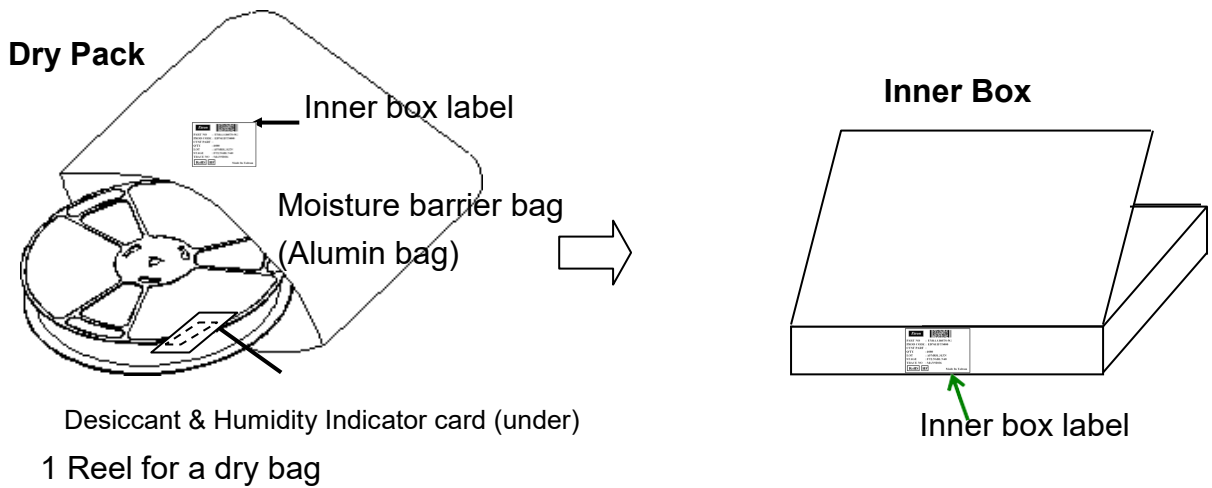
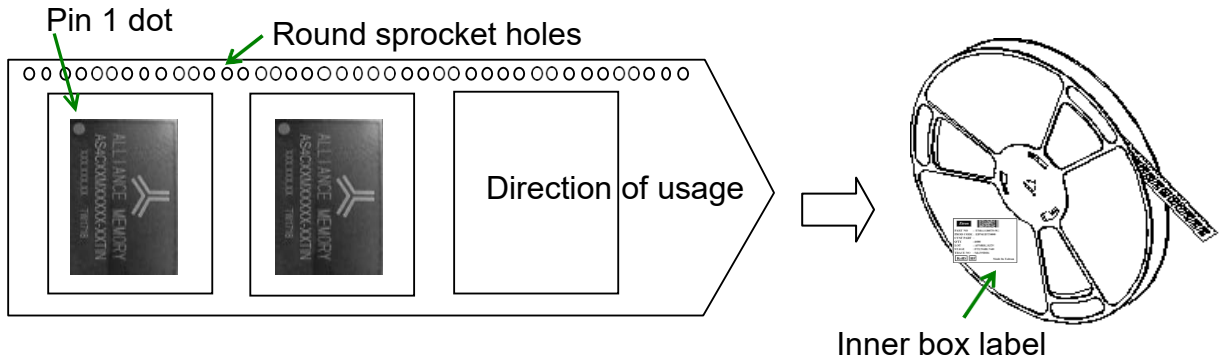
## (1) Packing Procedure -1

- Packing procedure for Tray



## (1) Packing Procedure -2

### ■ Packing procedure for Tape & Reel



## (2) Packaging Quantity

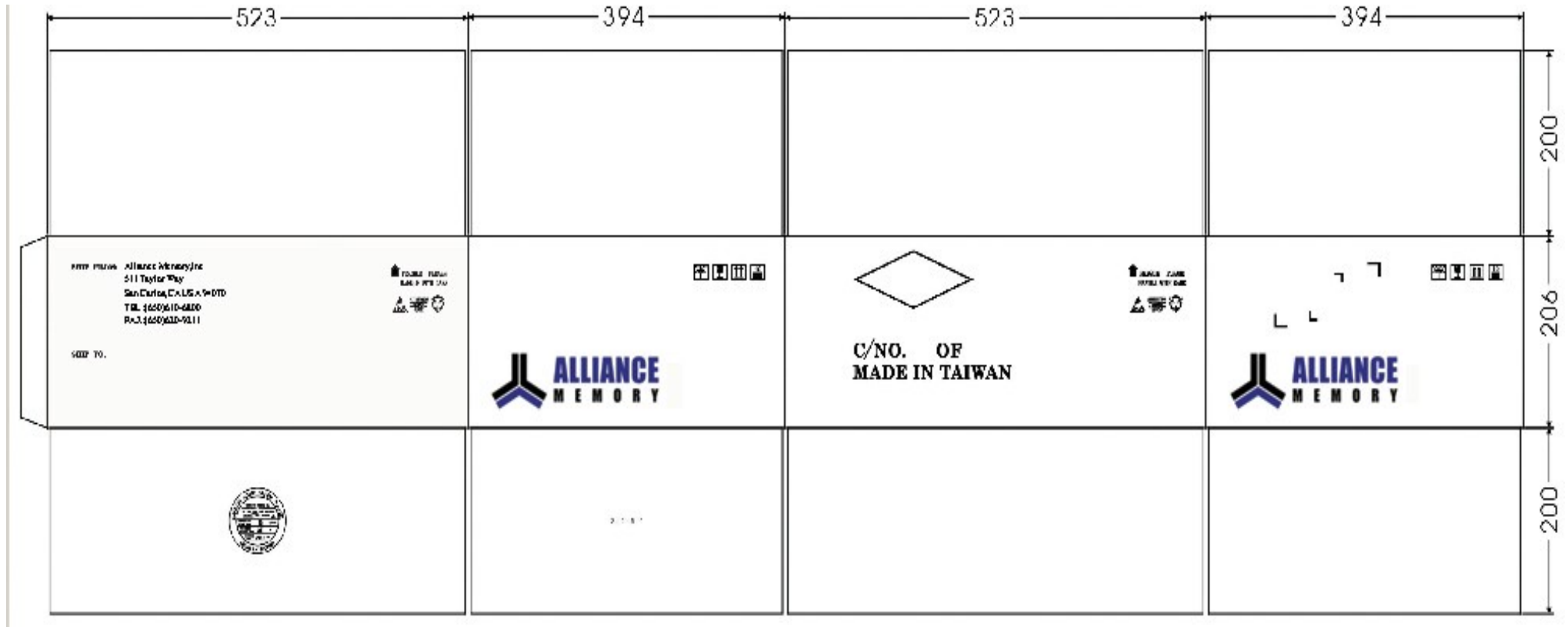
### ■ Quantity of Container

The quantity for each container is described as below table for reference.

Pkg. Type	Packing Qty	Dry Bag	Inner Box	Outer Box
9 x 13 96 Ball-BGA	190ea / Tray	10 Tray (1900 ea)	1 Dry Bag (1900 ea)	6 Inner Boxes (11400 ea)
	2000ea / T&R	1 Reel (2000 ea)	1 Dry Bag (2000 ea)	5 Inner Boxes (10000 ea)

## (3) Specification of Shipping Box -1

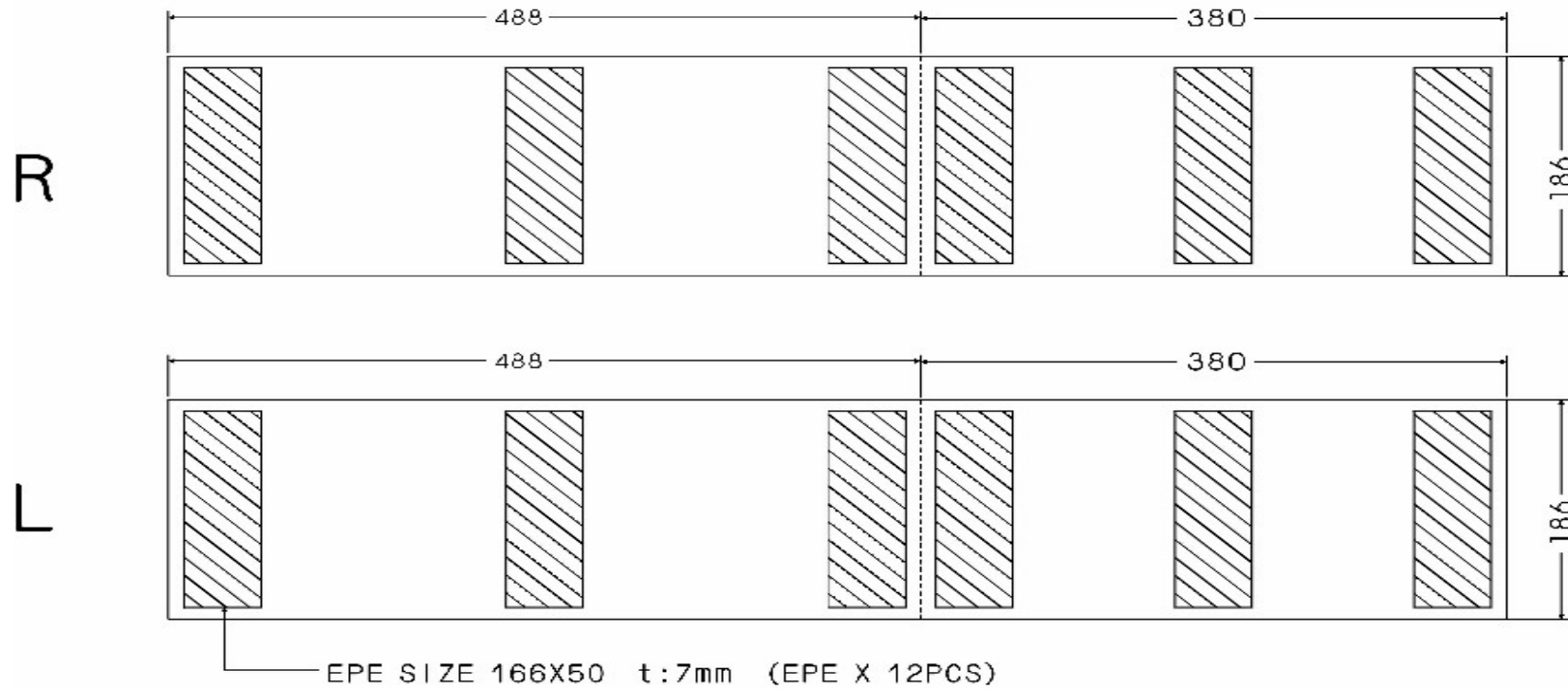
### ■ Tray Outer Box Drawing



Tolerance:  $\pm 5\text{mm}$

## (3) Specification of Shipping Box -2

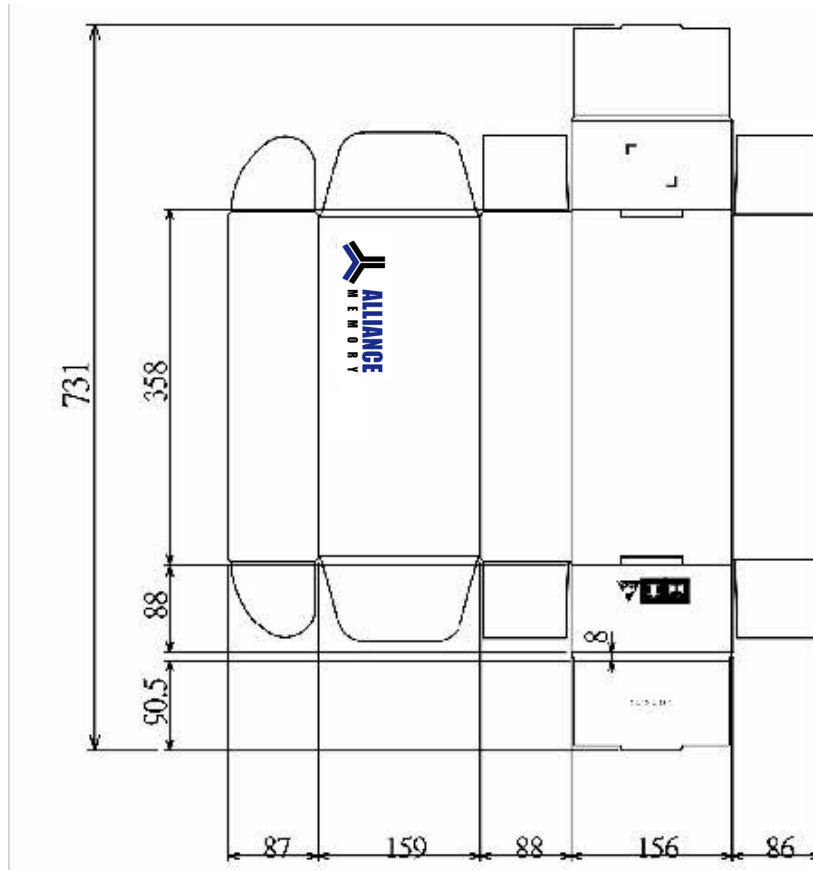
### ■ Tray Outer Box Drawing-buffer



Tolerance:  $\pm 3\text{mm}$

### (3) Specification of Shipping Box -2

#### ■ Tray Inner Box Drawing

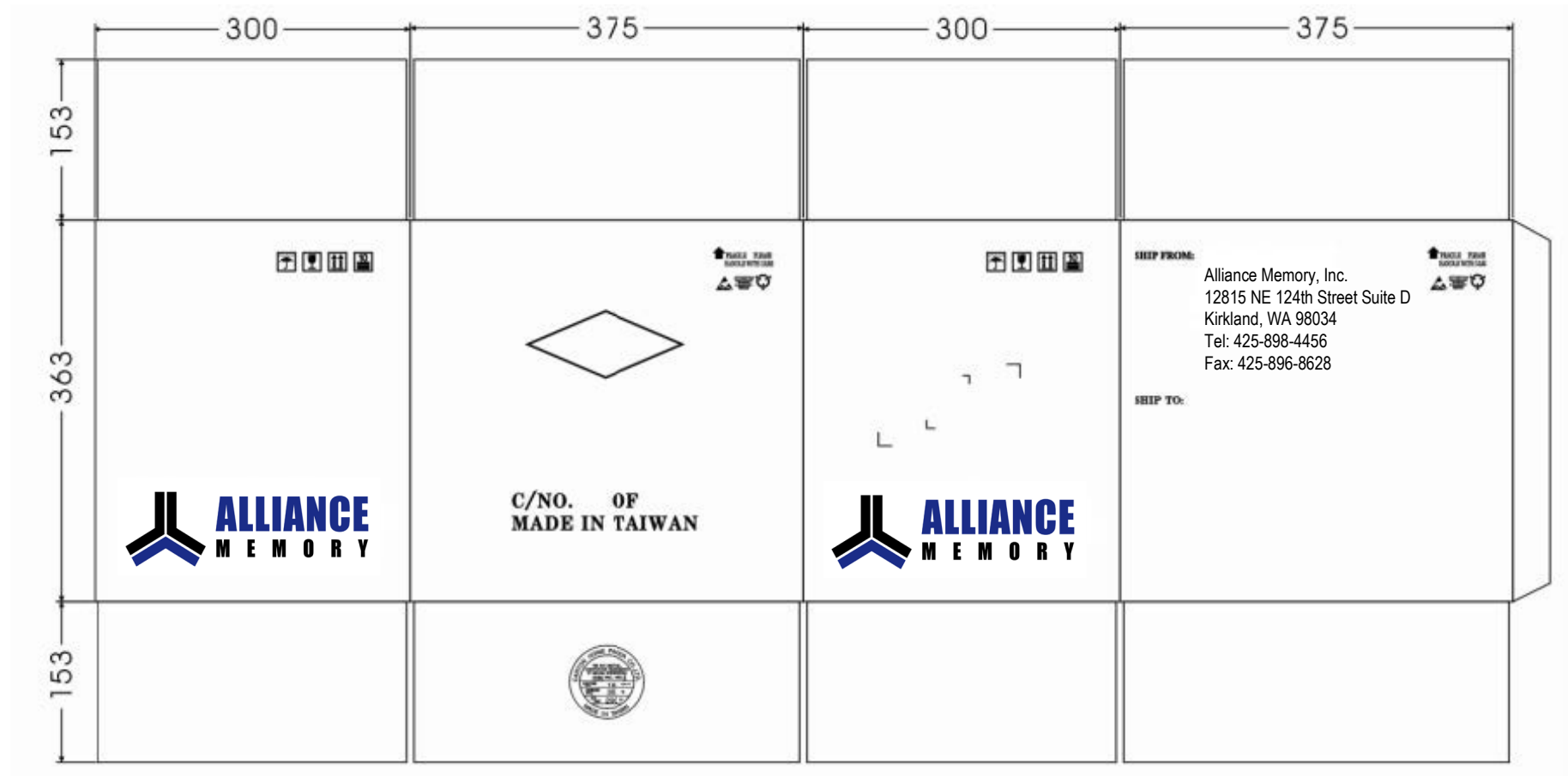


Tolerance:  $\pm 3\text{mm}$



## (3) Specification of Shipping Box -3

### ■ T/R Outer Box Drawing



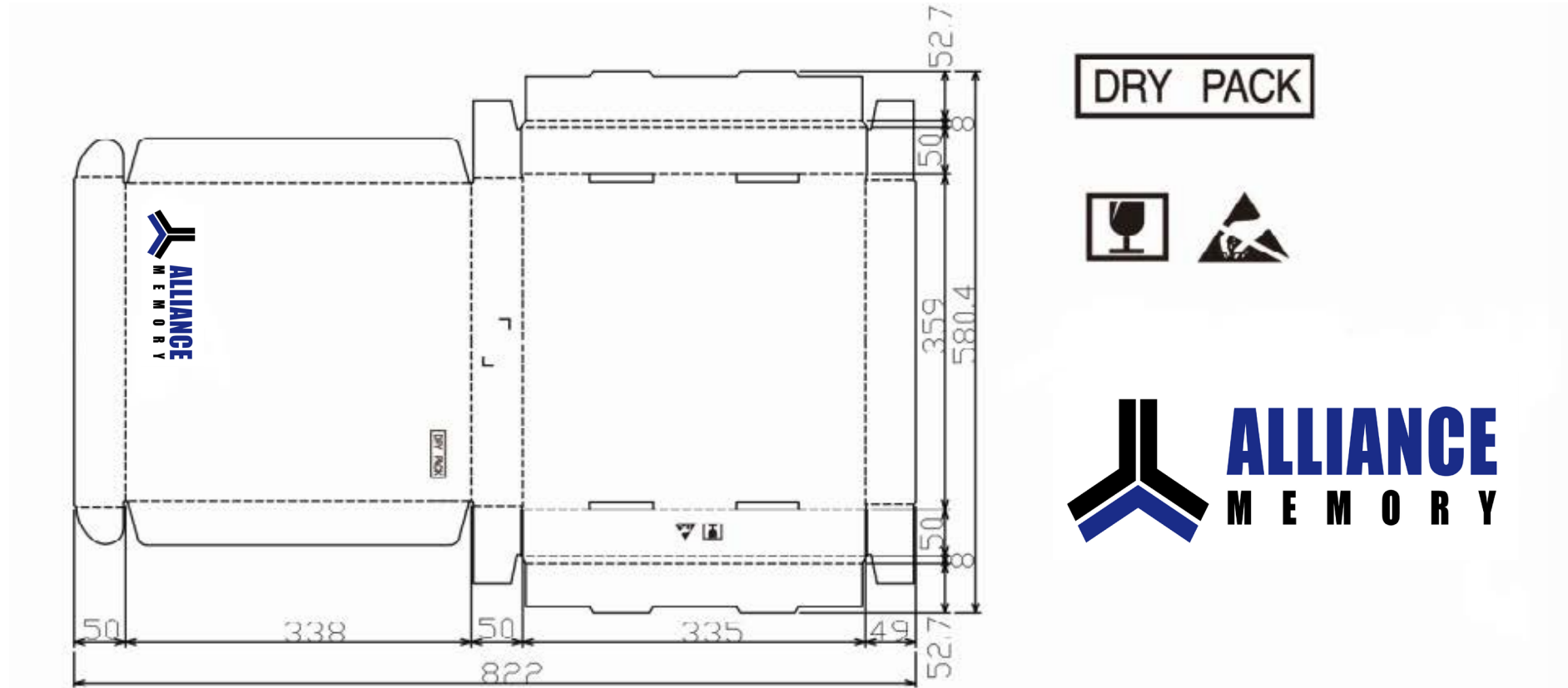
Tolerance:  $\pm 5\text{mm}$

Alliance Memory Inc. 12815 NE 124th Street Suite D, Kirkland WA 98034 USA  
 Alliance Memory Inc. reserves the right to change products or specification without notice.



## (3) Specification of Shipping Box -4

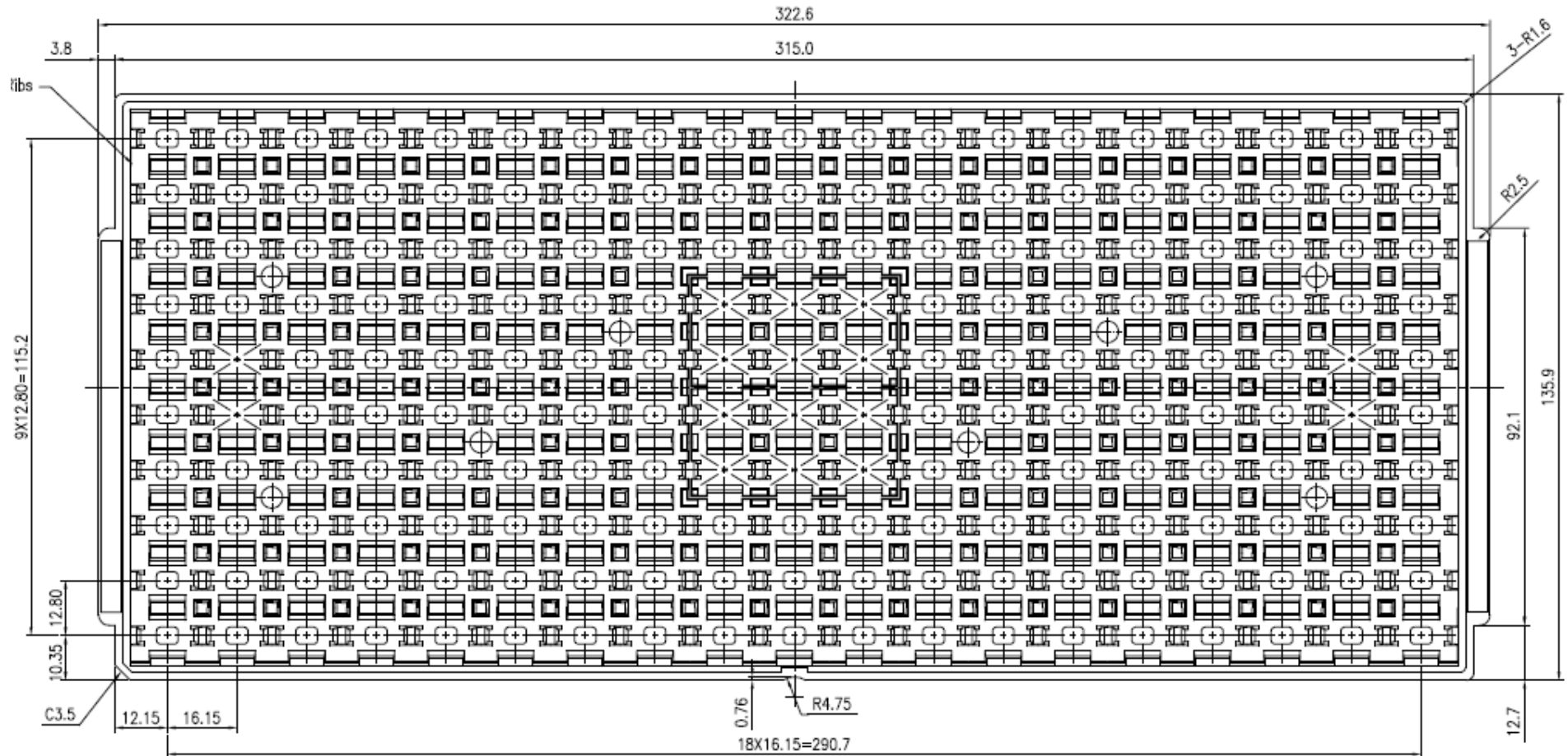
### ■ T/R Inner Box Drawing



Tolerance:  $\pm 5\text{mm}$

## (4) Packing Drawing -1

### ■ Tray Drawing of 9x13 96B BGA

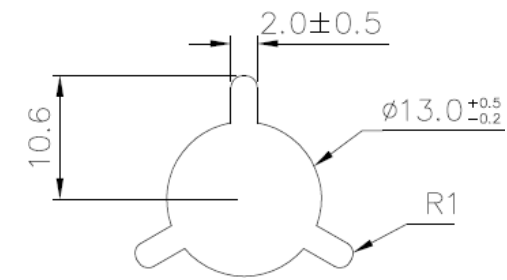
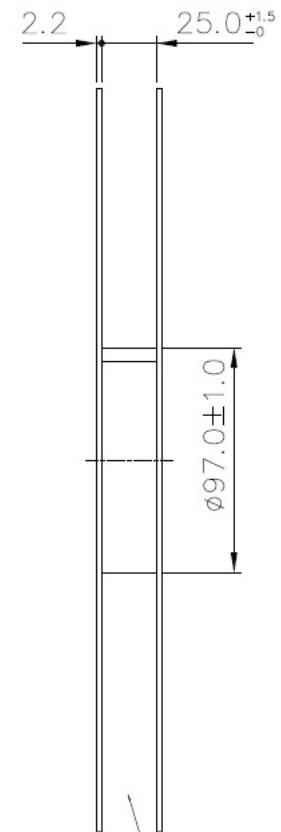
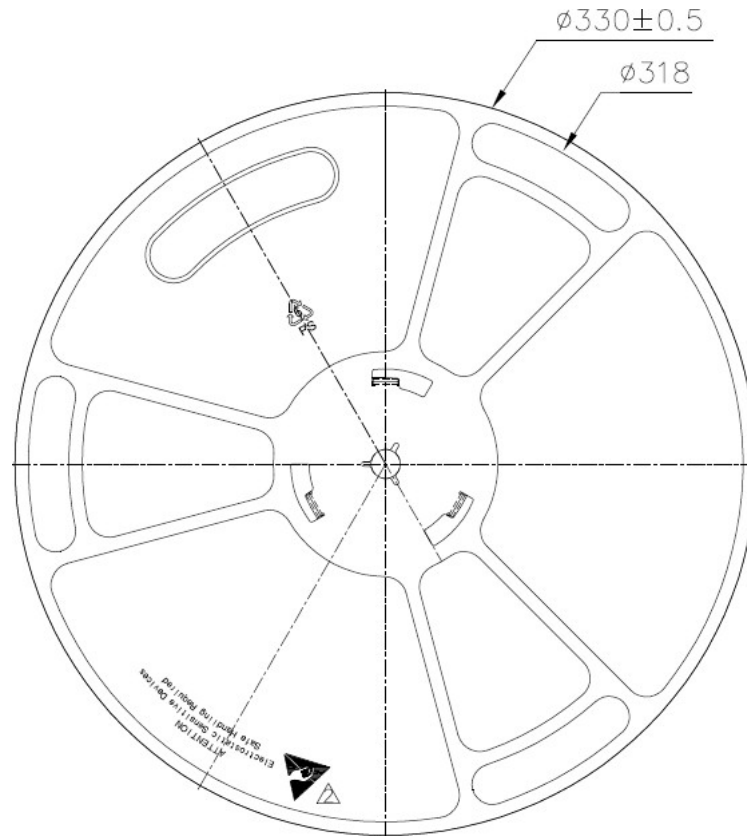


Note: general tolerance: X=±0.5 X.X=±0.25 X.XX=±0.13

Alliance Memory Inc. 12815 NE 124th Street Suite D, Kirkland WA 98034 USA  
 Alliance Memory Inc. reserves the right to change products or specification without notice.

## (4) Packing Drawing -2

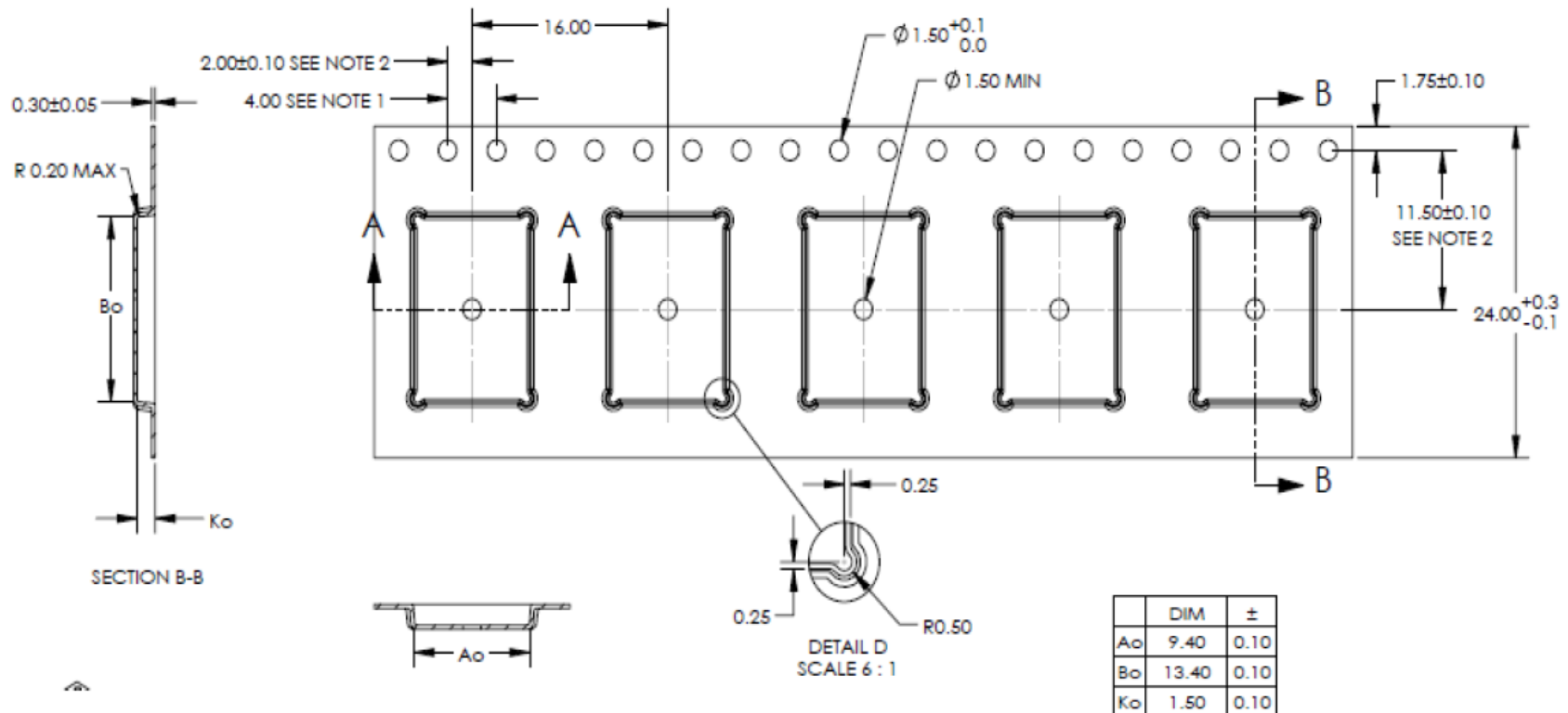
### Lock Reel Drawing of 9 x13 96B-BGA



Note: general tolerance:  
 X =  $\pm 0.5$   
 X.X =  $\pm 0.25$   
 X.XX =  $\pm 0.13$

## (4) Packing Drawing -3

- Carrier Tape Drawing of 9x13 96B-BGA



Note: general tolerance: X = ±1 X.X = ±0.25 X.XX = ±0.13

Alliance Memory Inc. 12815 NE 124th Street Suite D, Kirkland WA 98034 USA  
 Alliance Memory Inc. reserves the right to change products or specification without notice.